

pery, snowy, and wet roads. Gives greater mileage too. AND YOUR OWN TIRES PUTS A SET ON YOUR CAR

COME IN FOR OUR SPECIAL TRADE-IN OFFER TODAY!

Chelsea Tire, Cycle & Appliance Co.

157 Winnisimmet St., Chelsea CH 3-1434

Harry Holzman, Prop. Established 1921

Open Thursday and Friday Nights 'til 9 P.M.

IT WILL PAY YOU TO SEE US BEFORE YOU BUY!

B.F. Goodrich
FIRST IN RUBBER

park, believe me, and chase the Dodgers out with them.
As it is, this forthcoming world series should be most interesting. Both clubs are so bad that they are about even and perhaps the Dodgers will be the favorites.
As to that I don't know. Personally, I feel you had better string along with the Yankees. There is an old saying, stick with the champion until he is beaten.
A cave, according to geologists, is just a recess of no great extent in the side of a mountain or beneath the earth's surface. A cavern is vast, something with many chambers and with passages that ramify in many directions. There are 50,000 caves yet to be explored.

Pony League Box Score

DODGERS		15	
Martorano, 2b	2	2	1
Gosse, W. c	3	2	1
Galante, cf	3	1	1
Florentino, p	3	2	3
Lentini, rf	3	1	1
Rocci, ss	3	1	1
McGowan, 3b	3	2	0
McCauley, lb	3	2	0
Indigaro, cf	2	2	1
Centrella, c	1	0	0
Gosse, B. lf	0	0	0
TOTALS	26	15	10

RED SOX		15	
DeAngeli, ss	3	0	0

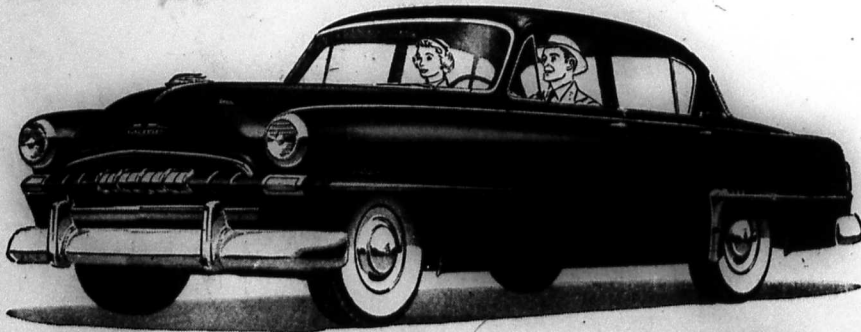
A grass introduced into the United States from Russia 50 years ago may help restore livestock ranges in Arizona and Mexico. The created wheat grass has been found to offer a quick and positive means for restoring range productivity in the cooler, more moist parts of the South-west.



easy to look at!

All-new styling and balanced designing make the new '53 Plymouth a more beautiful car, and a more spacious car! Inside, there's more head room, more hip room, more leg room—in all, 12 more cubic feet of space for passengers and luggage!

NEW '53 PLYMOUTH



easy to handle!

Plymouth's new HY-DRIVE lets you drive all day without shifting. Hy-Drive, the newest, smoothest, least expensive no-shift drive in the low-price field, gives you instant acceleration with whisper quietness. And you'll be amazed at the new Plymouth's ease of steering and parking!



easy to get in!

The new front seat in two-door models is divided 1/2-1/2—not in the middle. Rear seat passengers don't have to move a large, heavy seat section to get in and out, and they can enter and leave the rear compartment without disturbing passengers in the front seat.

and wait till you feel that truly balanced ride!

It's easy to see why so many motorists say the new '53 Plymouth is the finest low-price car ever built! Why not visit your nearest Plymouth dealer soon, and let him show you all the new value features in this great new Plymouth? Your dealer will be happy to arrange a demonstration for you.



PLYMOUTH—Chrysler Corporation's No. 1 Car

Hy-Drive is available at low extra cost on any 1953 Plymouth

D. Novelty Boys 10-13
A. J. Many made
A Visit To A Television Studio
Master of Ceremonies: Arthur Ross
At The Olympics
A. Diving Girls.
B. Diving Boys.
C. 50 Yd. Freestyle Girls 14-16.
D. 50 Yd. Freestyle Boys 14-16.
E. 30 Yd. Backstroke Girls 14-16.
F. 50 Yd. Backstroke Boys 14-16
A Visit To New York City
A. Billy Rose's Acquacade—Claire Barry, Marilyn Bryan, Maureen Cummings, Diane Dello Russo, Joanne Pagan, Nancy Fagan, Betty Gould, Carol Maloney, Janet Ross, Aldena Schaeffe.
B. At The Bowers—Marie Bradley, Carol Dello Russo, Judy Frasca, Kathie Gould, Pearl White.
C. Radio City Music Hall—Claire Barry, Marilyn Bryan, Maureen Cummings, Diane Dello Russo, Joanne Pagan, Nancy Fagan, Betty Gould, Carol Maloney, Janet Ross, Aldena Schaeffe.

MAJOR LEAGUE STANDING

AMERICAN LEAGUE			
	W	L	Pct.
New York	84	59	.683
Chicago	75	49	.605 1/2
Cleveland	70	52	.569 1/4
BOSTON	70	56	.558 1/2
Washington	61	66	.484 2/3
Philadelphia	50	73	.407 3/4
Detroit	43	78	.354 2/3
St. Louis	42	84	.333 1/3

NATIONAL LEAGUE			
	W	L	Pct.
Brooklyn	85	56	.604
Milwaukee	77	49	.611 1/2
Philadelphia	69	56	.552 1/2
St. Louis	67	55	.549 1/2
New York	58	65	.472 2/3
Cincinnati	56	66	.464 2/3
Chicago	47	76	.382 3/4
Pittsburgh	41	91	.311 1/8

Press Search for Missing Smith Girl

Police Ask Students Aid in Hunt

WELLESLEY, 4288 — Police today sought the aid of Smith College students throughout the country in the search for Sylvia Flath, 20, pretty junior-honor student, who vanished two days ago.
The girls were being contacted by police in the hope they may furnish a clue to Sylvia's mysterious disappearance.
Wellesley Police Chief Robert B. Marvey said there was a "small chance" the missing girl may have got in touch with some of her school chums.
Police and volunteers, meanwhile, combed a five-mile stretch of woods that runs from the vicinity of the Flath home to the Weston line.
Sylvia, who topped the list of juniors last year at Smith, disappeared after leaving a note to her widowed mother, Mrs. Aurelia S. Flath, Boston University professor, in which she said she was "going for a hike." The note said she expected to return the following day.
Fears for the girl's safety mounted when it was reported a bottle of sleeping pills was missing from her mother's room.

Town Honors Milford Jr. Legion Team

MILFORD 4288—The town of Milford today was solidly behind its Junior American Legion baseball team.
The team, eastern sectional champion, was honored with a colorful parade through Milford streets, while 10,000 residents of the area thronged sidewalks to pay homage. Team members covered the route on a fire engine.
The team will leave Saturday for Miami, Fla., to take part in the national competition beginning next Tuesday.

It is predicted that by 1963 gas turbines with an efficiency of about 30 per cent will gradually supplant the older gasoline engine, which at the very best is 25 per cent efficient.

On our own observation we had to admit there weren't too many.
What has brought about the change in attitude? Our scout friend went on, "there are many things that may be the cause. One thing for sure is the better standard of living, the kids today have more money." Look at the cars they ride around in. They can't find time to play baseball with all the other interests.
"Of course there are exceptions, I've seen about a half-dozen kids this season that I think have the stuff to make the grade. They may go sour but right now they're promising."

Another scout, Bill O'Connell of the Dodgers, made up a list for me two week-ends ago at the Regionals at Tufts. "I'll give you this list," he said before the start of the second day of play, "and after the tourney is over you check back on it and see how close I come to your own selection." We pocketed the list and forgot about it until we accidentally came across it several days later. Checking it over we learned that the well-known scout apparently had followed the boys closely. Those he did name were about the best in the tourney.

We asked Bill about a particular player on Milford's champion team. This boy had played fine ball, looking very impressive and quite a bit more mature in his play than the other fellows on his club. But we had also noticed that the scouts weren't watching him very closely.
"The colleges will be after him," replied the Dodger scout. "He's a good ball player—but." Then he came forth with a list of reasons that went from having not shown much improvement down to the shape of the boy's legs. The average baseball fan would not have looked for those characteristics in judging the boy as a potential big leaguer.
SOME LOCALITIES SHOW PROMISE
Medford has several young lads of high school age that at this point are promising players. Whether they will continue to be such next season is mostly up to themselves. If they take their baseball seriously they may be able to step up to a major league contract after their college or even high school eligibility is over.

Several scouts have liked the looks of two boys who played on Coach John D'Arangelo's Post 45 Legion nine this past season. One of them is Fred Hildebrandt, the Medford catcher, and the other Angie Marotta, the team's young shortstop. Fred has another season of high school baseball ahead of him. Marotta will be back on the Post 45 team next summer plus two more high school seasons.
We did not see a better catcher until the sectional play when Elizabeth, N. J. had a cracker-jack of a receiver. As far as a fielding shortstop we saw no finer than Marotta. With two more seasons under his belt he should be ranking with the best all-around.
These two plus several others will be in for some watching next season. Some of the Medford fans volunteered information on their abilities to several scouts. "We'll be around," they said.
But whether the boys will be able to be among those aiming for the top rung of the baseball ladder will be pretty much up to themselves. When a youngster is really determined to reach a goal he's difficult to stop.

Listen to Al Frezza's "Sports Lowdown" Monday through Saturday at 5:30 P.M. on WHIL, 1430 on your radio dial.

Inflation Is Really Becoming a Problem

HARTFORD, Conn., 4288 — The limbo of old saloons where no woman enters, and there is sawdust on the floor and free lunches on the bar will soon harbor another outcast — the 10 cent beer whose ancestor, the nickel beer, has long been there.
The Hartford County Restaurant-Liquor Association has announced plans to boost the price of a glass of beer to 15 cents after Sept. 1.

Pittsfield Woolen Plant Closes Down

PITTSFIELD, 4288 — A spokesman for the American Woolen Company's pioneer mills at Pittsfield said today the plant will discontinue operations Sept. 18.
The nation's population was about 159,475,000 on June 1.